



brina

High-end mechanical ventilator that provides invasive and non-invasive ventilation, for adult, paediatric, and neonatal patients.

High-tech, high trust.

tecme.SCHILLER

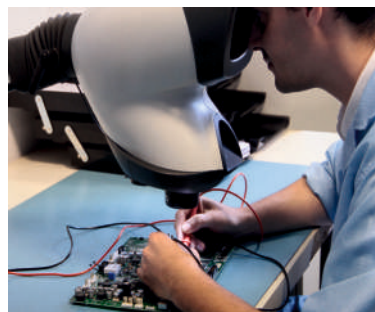


SCHILLER
The Art of Diagnostics

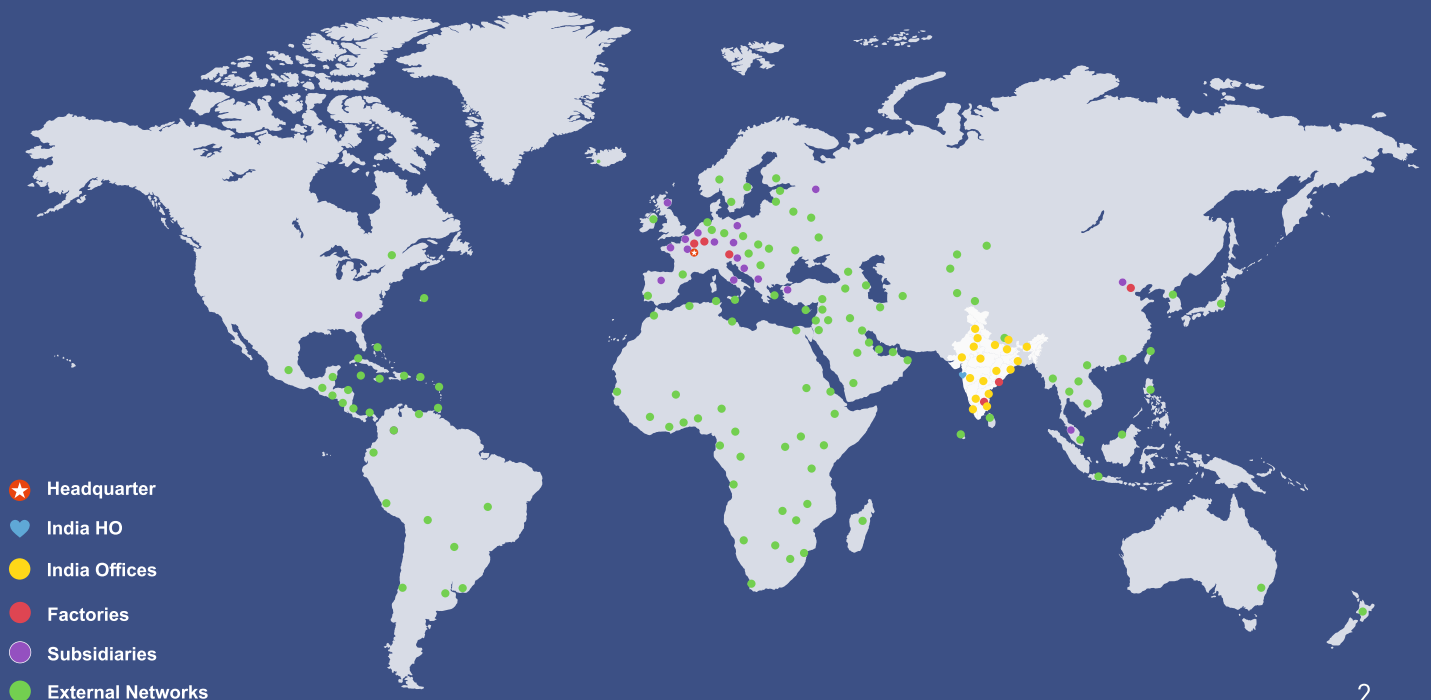
Committed to life

SCHILLER is a global leader in the manufacturing and supply of cardiopulmonary diagnostic devices, defibrillators, patient monitoring systems, and medical software solutions for more than 50 years.

Over the past 25+ years, SCHILLER has established itself as a leader in the medical technology sector in India. Schiller India offers state-of-the-art ventilators designed for advanced respiratory support in critical care. Our products enhance patient outcomes and healthcare efficiency, earning the trust of medical professionals. Schiller India's ventilators are synonymous with innovation and quality in respiratory care.



Worldwide Presence of Schiller



brina

**A clean user interface.
Easy to learn and navigate.**



- High resolution 18” touchscreen with intuitive user interface makes the ventilator’s operation not only easy but quick.
- Detachable and rotative screen.
- Highly-visible alarm indicator.
- Integrated connectivity module allows you to connect the ventilator with different systems to improve healthcare outcomes.
- The design of the VentBox gives the user the option to mount it on a trolley, ceiling supply or shelf.

Taking our mechanical ventilation and life support technology to the next level

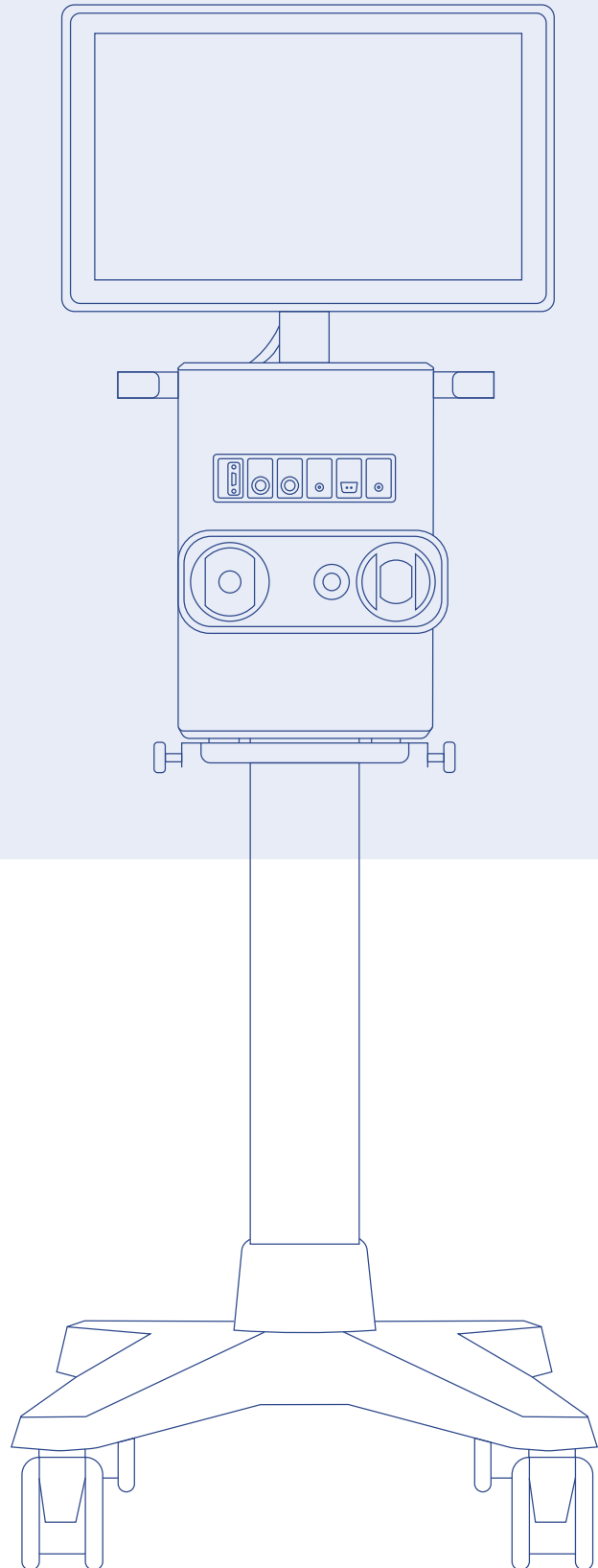


Today, after years of research and investigation, the time has come to present Brina: our most advanced, new-generation ventilator family.

Characteristics:

A step forward in design

- High-resolution touchscreen
- Detachable and modular design
- Smart and intuitive interface
- Comprehensive monitoring
- Wide variety of software features



Design

Smart and intuitive interface

Ultimate touchscreen

High-resolution 18.5" touchscreen with intuitive user interface makes the ventilator's operation not only easy but quick.



Detachable and rotative

Highly visible alarm indicator.
The design of the VentBox gives the user the option to mount it on a trolley, ceiling supply or shelf.

Design

Improved design for more accurate measurements



The **Expiratory Port** has been specially developed for a more direct and precise electronic control of the respiratory phases of the breathing cycle. It enables an improved response time and the spontaneous breathing of the patient even during the inspiratory phase in pressure-controlled modes.

The **Paramagnetic oxygen sensor** has been integrated to perform efficiently and continuously throughout the life cycle of the ventilator, removing the need of a periodic replacement.

User Experience

Simple and clean user interface.
Designed to take important decisions in different situations.

Active Lung

Active lung for a graphic and better visualization of the patient's ventilatory condition. The compliance of the lung and the resistance of the airway are shown graphically and numerically. The lungs, together with the diaphragm, expand and contract synchronizing with the patient's breaths.



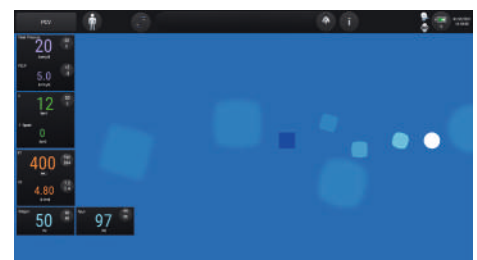
Numerical Screen

Visualization designed to be used during the medical room review, improving the visibility of the parameters from a distance.



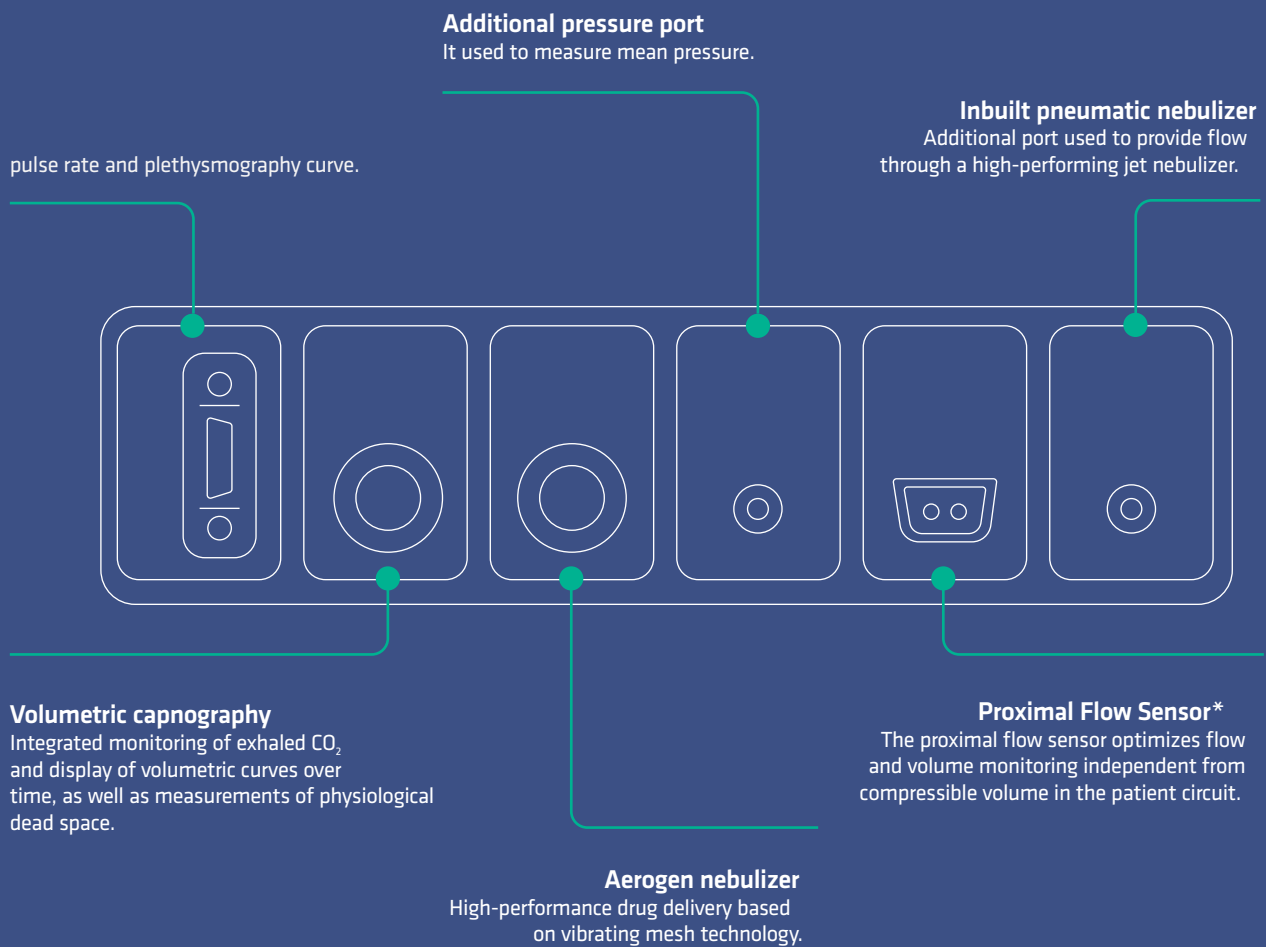
Family View

Visualization designed to generate a friendly environment during family visits without losing monitoring of the basic ventilation parameters.



Modular design

Adaptable to different clinical environments and needs:



*Only available for neonatal patients



PEsof Esophageal Manometry

By measuring transpulmonary pressure, Brina shows progress in the understanding of respiratory mechanics and patient-ventilator asynchrony (PVA).

The esophageal manometry maneuver makes it possible to calculate the elastic condition of the lungs and thorax individually, providing the user with valuable information to assess respiratory mechanics.

Once measurements are completed, the following values are obtained:

- Transpulmonary Plateau Pressure (PL_{Plateau})
- End-expiratory Transpulmonary Pressure (PLEE)
- Transpulmonary Driving Pressure (PL Drive)
- Lung Compliance (CL)
- Thorax Compliance (CWC)



AVA Adaptive Ventilatory Assist

The AVA mode is an adaptive closed loop mode that guarantees a minute volume ventilation of the patient generating a ventilatory pattern with the minimal respiratory work.

The algorithm will calculate automatically and in real time the optimum respiratory rate and the appropriate tidal volume to reach the minute volume with the minimum respiratory work (Otis equation). The calculated parameters will always be kept within safety limits to avoid situations of hyperventilation, hypoventilation, air trapping or volutrauma. The algorithm will never generate parameters that are outside the safety limits dictated by what is called "expert rules", thereby ensuring patient protection.

The AVA mode also allows a smooth transition from controlled ventilation to completely spontaneous ventilation in an automated way.

As main parameters, the operator must program only 2 values:

- Ideal body weight of the patient, used to calculate the optimal minute volume.
- The percentage of the calculated minute volume to be administered.

Software

Wide variety of modes and tools of ventilation for personalized and different clinical needs.

High-Flow Oxygen Therapy (HFOT)

A non-invasive respiratory support modality that delivers a heated and humidified gas mixture with a set FiO_2 at high flow rates, stabilizing respiratory function with excellent patient tolerance.

Spontaneous Breathing Trial (SBT)

A brief diagnostic test that helps determine whether a mechanically ventilated patient can breathe adequately on their own, with real-time monitoring and alarms for enhanced safety.

Volume Guaranteed (VG)

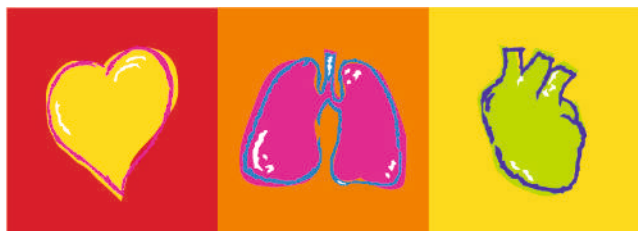
A ventilatory mode that adjusts the pressure of each breath to achieve a target tidal volume, even in the presence of changes in lung mechanics or leaks. Designed for more stable, safe, and protective ventilation.

Mechanical Power

Represents the energy delivered by the ventilator to the lungs per minute and helps assess the overall risk of ventilator-induced lung injury.

Elastic Index

Combines driving pressure and respiratory rate to summarize the mechanical load applied to the respiratory system and guide protective adjustments of volume and frequency to reduce lung stress.



SCHILLER

The Art of Diagnostics

About SCHILLER

SCHILLER A. G., a company based in Switzerland, was founded by Alfred Schiller in 1974. Over the last 50 years, it has evolved into a successful Global Group with 31 subsidiaries and dealers across 30 countries. Today, SCHILLER is a world-leading manufacturer and supplier of devices for cardiopulmonary diagnostics, defibrillation and patient monitoring as well as software solutions for the medical industry.

Schiller in India was founded as a joint venture in 1997, and since then has established itself as a leader in the medical technology sector. With 450+ employees, a state-of-the-art ISO 13485-certified production centre in Puducherry, multiple R&D centres, and 17 offices across India; Schiller makes advanced healthcare equipment accessible through a network of 100 sales and service dealers across more than 45 locations. Our product range includes Critical Care, Anaesthesia, Emergency Care, Cardiology, Respiratory Diagnostics, Radiology, and Robotics.

Scan here
to know more



Part no.: B11.100017  2/2026 Ver no.1.1

Accessories shown are not part of standard configuration

All registered trademarks acknowledged.

Technical data are subject to change without notice

SCHILLER
The Art of Diagnostics

Swiss H.Q.: SCHILLER AG, Altgasse 68, P. O. Box 1052, CH -6341 Baar, Switzerland

Indian H.O.: Schiller Healthcare India Pvt. Ltd., Advance House, Makwana Road, Andheri (East), Mumbai-59. Tel : + 91 - 22 - 61523333

Factory : No. 15/5 & 15/6, Vazhuthavur Road, Kurumbapet, Puducherry - 605 009, India

Regional Offices: Mumbai: 022-61523333 Email: sales.west@schillerindia.com Delhi: 011-41062067 / 09312432205 Email: sales.north@schillerindia.com Kolkata: 033-23593102 / 033-23593103 Email: sales.east@schillerindia.com Chennai: 044-28232648 / 044-28311021 Email: sales.south@schillerindia.com Ahmedabad: 079- 35337949 / 079- 35337950 Email: sales.west@schillerindia.com Puducherry: 0413- 220 2680 / 0413- 229 2940 Email: sales.south@schillerindia.com

CIN : U33110MH1997PTC111307

 sales@schillerindia.com, help@schillerindia.com  www.schillerindia.com  1800 209 8998

Follow us on :  /SchillerHealthcareIndia  /schiller_healthcare_india  /schillerhealthcareindia  /schiller_healthcare_india  @schillerindia1074