

neumovent. SCHILLER



Comprehensive monitoring
High-flow oxygen therapy
New ventilation modes



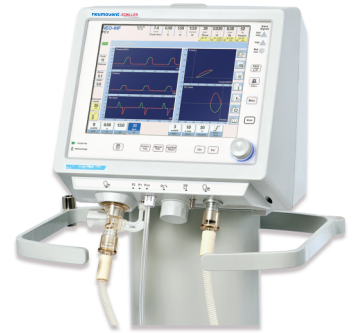
Mechanical ventilator that provides
invasive and non-invasive ventilation,
for neonatal & paediatric patients



SCHILLER
The Art of Diagnostics

GraphNet neo

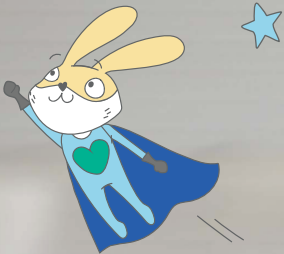
GraphNet neo is tailored for neonatal intensive care, offering both invasive and non-invasive support for infants, including premature babies, while closely monitoring key respiratory parameters.



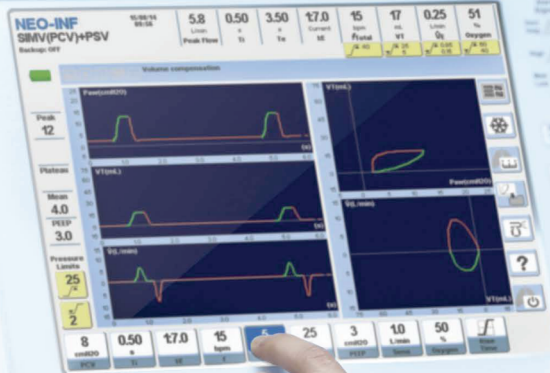
COMPREHENSIVE MONITORING

- The proximal flow sensor enhances flow and volume monitoring in the patient circuit, enabling accurate ventilation parameter measurements for informed decision-making, effective treatment, and ensured patient safety

Because they deserve the best care.



neumovent SCHILLER

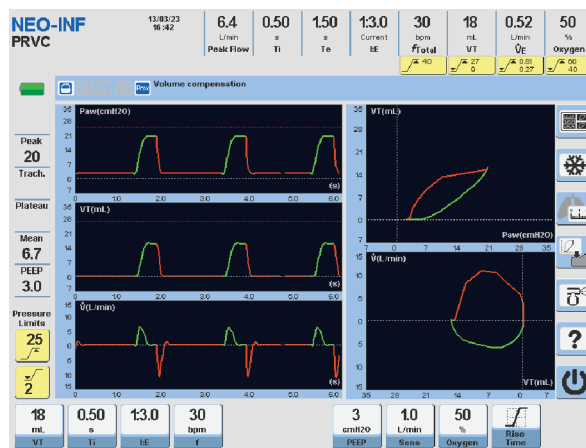




- ✦ Ventilation for neonatal patients
- ✦ Available for both invasive and non-invasive ventilation
- ✦ Continuous flow CPAP: non-invasive ventilation using nasal prongs with automatic leak compensation
- ✦ High-flow oxygen therapy
- ✦ Proximal flow sensor for enhanced monitoring
- ✦ Respiratory mechanics menu
- ✦ Suitable for intra-hospital transportation
- ✦ Accurate tidal volumes starting from 2mL
- ✦ 72 hours of trend storage
- ✦ Built-in battery with over 2.5 hours capacity
- ✦ Numerical display screen

TARGETED VENTILATION MODE

- ✦ PRVC is an adaptive mode that automatically adjusts the pressure setpoint to ensure the user-configured volume, while accounting for potential changes in the patient's lung impedance.



HIGH-FLOW OXYGEN THERAPY

- ✦ The addition of this method expands the use of the ventilator to the stages that are prior to and after the mechanical ventilation itself, by providing non-invasive assistance to oxygenation



SCHILLER

The Art of Diagnostics

SCHILLER, founded in 1974 by Alfred E. Schiller is a successful group with 31 subsidiaries and a global sales network. Today, SCHILLER is a world-leading manufacturer and supplier of devices for cardiopulmonary diagnostics, defibrillation and patient monitoring as well as software solutions for the medical industry.

Over the past 25+ years, Schiller India has established itself as a leader in the medical technology sector. With 450+ employees, a state-of-the-art ISO 13485-certified production centre in Puducherry, and multiple R&D centres across the globe, Schiller India makes advanced healthcare equipment accessible through a network of 100 sales and service dealers across more than 45 locations. Our product range includes Critical Care, Anaesthesia, Emergency Care, Cardiology, Respiratory Diagnostics, Radiology, and Robotics.

Scan here
to know more:



Part no.: B11.100015  02/26 Ver. no.: 1.1

Accessories shown are not part of standard configuration All registered trademarks acknowledged.

Technical data are subject to change without notice

SCHILLER
The Art of Diagnostics




Swiss H.Q.: SCHILLER AG, Altgasse 68, P. O. Box 1052, CH -6341 Baar, Switzerland

Indian H.O.: Schiller Healthcare India Pvt. Ltd., Advance House, Makwana Road, Andheri (East), Mumbai-59. Tel : + 91 - 22 - 61523333

  No. 15/5 & 15/6, Vazhuthavur Road, Kurumbapet, Puducherry - 605 009, India

Regional Offices: Mumbai: 022-61523333 Email: sales.west@schillerindia.com Delhi: 011-41062067 / 09312432205 Email: sales.north@schillerindia.com Kolkata: 033-23593102 / 033-23593103 Email: sales.east@schillerindia.com Chennai: 044-28232648 / 044-28311021 Email: sales.south@schillerindia.com Ahmedabad: 079- 35337949 / 079- 35337950 Email: sales.west@schillerindia.com Puducherry: 0413- 220 2680 / 0413- 229 2940 Email: sales.south@schillerindia.com

CIN : U33110MH1997PTC111307

 sales@schillerindia.com, help@schillerindia.com  www.schillerindia.com  1800 209 8998

Follow us on :  /SchillerHealthcareIndia  /schiller_healthcare_india  /schillerhealthcareindia  /schiller_healthcare_india  @schillerindia1074