



PowerCube **Body+**

Body plethysmograph

Extremely long life hardware meets individual software configurations



SCHILLER
The Art of Diagnostics

ROBUSTNESS AND QUALITY

Simple and puristic design that fits perfectly into the medical workflow. The most individual and robust body plethysmograph – for measuring most PFT parameters at one workstation. PowerCube Body+ hardware and LFX software can be easily configured to meet

specific requirements and preferences. With the enhanced long-term stability and analysis algorithms, users can instantly identify asthma, COPD, restrictions, or combinations of these conditions with just a quick look at the waveform.



Long life,
robust hardware



Versatile, fast and compatible
LFX software platform



Lowest costs per
measurement in industry



Spare part
free



Maximum device
configurability



Highly accurate
and precise

Sustainability, performance, hygiene and design. Rethought.

The GANSHORN PowerCube Body+ sets a new focus on first-class quality and the highest precision down to the smallest detail. Thanks to the fully barrier-free wheelchair version, it offers improved patient comfort and increased safety, while hygiene measures are made significantly easier and faster thanks to the well-thought-out design. Equipped with an

innovative, calibration-free and waterproof SharpFlow ultrasound sensor, the device delivers fast, reliable and precise results. The clear design of the GANSHORN PowerCube Body+ combines elegance with functionality and is not only a visual highlight in your laboratory, but also makes everyday work easier thanks to optimized hygiene.

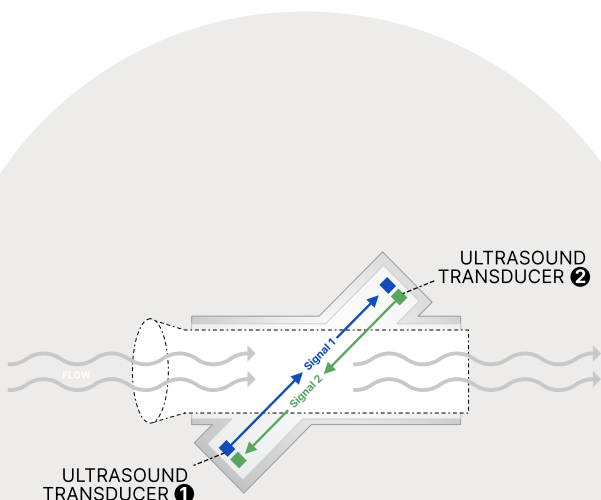


SharpFlow

The GANSHORN ultrasound technology

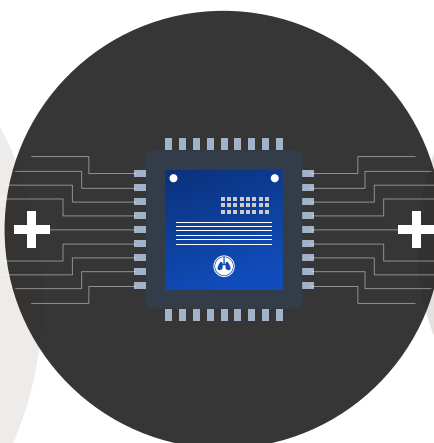
Two diagonally opposite ultrasound transducers alternately send and receive ultrasonic waves. Without any air flow inside the breathing insert, the transit time of the ultrasound waves is the same in both directions. Any air flow inside the insert will accelerate the waves in one direction and decelerate in the other.

The difference between the transit times of the ultrasound waves allows to calculate the flow. Flow and gas density are calculated from the measured transit times, allowing changes in the concentration of the exhaled gases to be determined directly and at the same time with the respiratory volume. All other factors like gas properties, humidity and temperature are the same for both directions and cancel each other out.



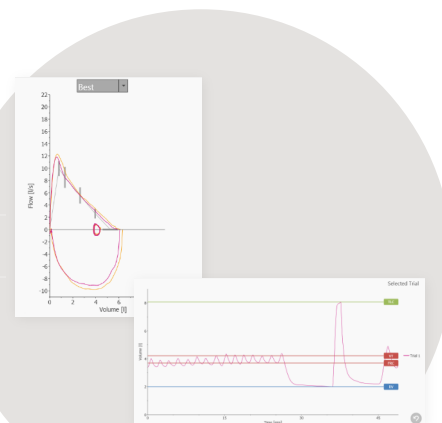
1 Double ultrasound signal capturing

The ultrasound measuring system captures the signal with two sensors, in both directions simultaneously, for spatially precise recording



2 Measurement hardware acceleration

Devices based on SharpFlow measurement technology run on a sophisticated and proven hardware logic.



3 High-resolution diagram rendering

Based on the multi-layered recorded values, the measurement software LFX is able to render particularly precise and sharp graphics.



Precision + Resolution

The high sampling resolution is a prerequisite for reliable determination of flow
No noticeable resistance during breathing



No detours

No substitute parameters for flow necessary (e.g. Differential pressure)
Direct flow measurement based on digital measurement technology



Room climate-independent

Not affected by changing ambient conditions like temperature or humidity of breathing air

COMPLETE PACKAGE

The PowerCube Body+ station includes a medical All-in-One touchscreen PC and comes optionally with an ergonomic height adjustable trolley.

System accessoires like an external printer and isolating transformer are elective.

Work station

- ✓ Optional medical grade ergonomic trolley
- ✓ height adjustable
- ✓ medical All-in-One PC with touch function
- ✓ optional with isolating transformer



CONFIGURATIONS

Programs	Standard	Option	Functions	Standard	Option
■ Microsoft SQL / MySQL	✓		■ Bodyplethysmography	✓	
■ XML reports	✓		■ Slow spirometry	✓	
■ Multiuser license		✓	■ Forced spirometry	✓	
■ Worklist		✓	■ Single breath diffusion		✓
■ DICOM/GDT/HL7		✓	■ N2 washout		✓
Variations			■ Provocation		✓
■ Trolley			■ Rhinomanometry		✓
■ Floor color selectable			■ MIP/MEP		✓
■ Bench or chair			■ SNIP		✓
■ Comfortable entry due to handle and elevated seating position					
■ Wheelchair, XL and standard cabin					

FEATURES



Electromagnetic door lock

with LED locking indicator



"Safety unlock" button

gives patients sense of control



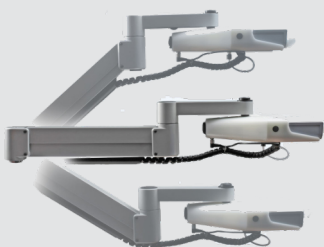
Patient speaker and microphone

for a maximum of cooperations



3D swivel arm

Fellexible, height-adjustable interface



Maximum comfort

Panorama view and LED lights



Multiple options

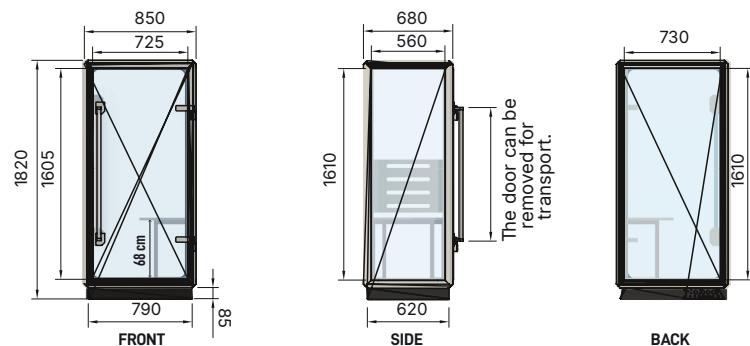
Easy integrations of diffusion and/or provocation



DIMENSIONS (mm) & SET-UPS

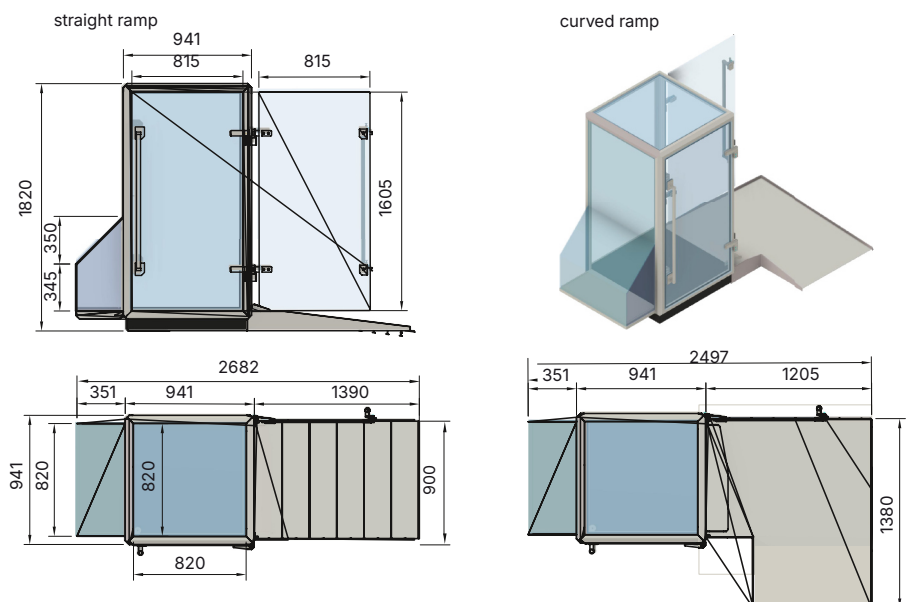
Standard cabin

This setup is exclusively equipped with spirometry and body plethysmography measurement capabilities and is ideal for retrofitting existing infrastructure.



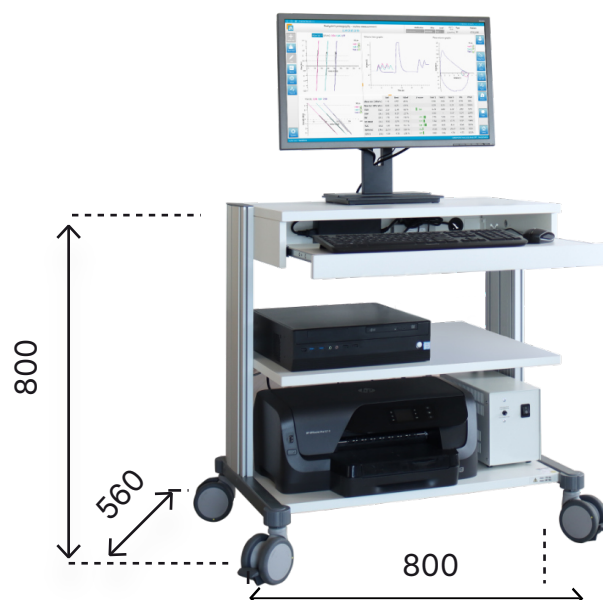
Wheelchair cabin

In contrast to the competitor's devices, you can also order the PowerCube in a truly barrier-free version. With this, body plethysmography is also possible with a wheelchair. Available as PowerCube Body+ Cabin with curved or straight ramp, standard or XL dimension.



Set-Ups

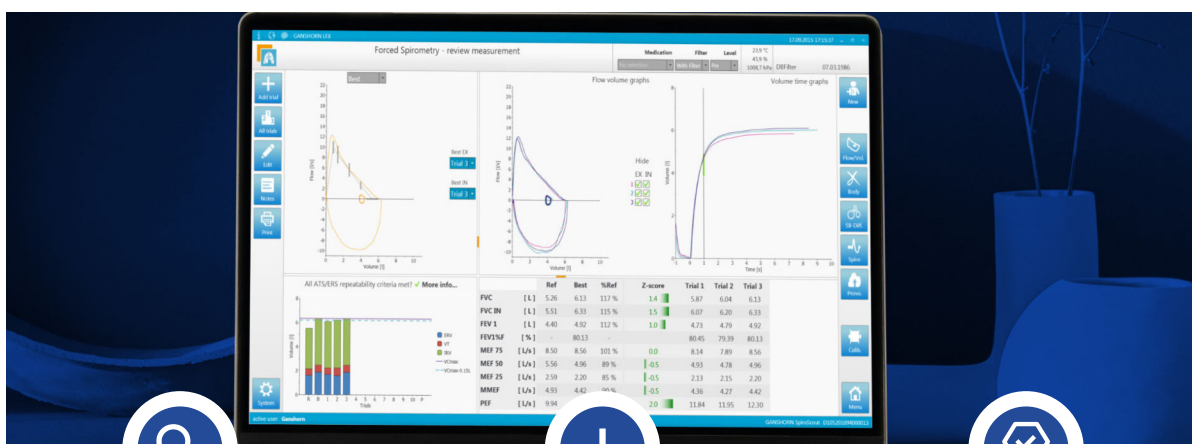
**Seated workplace
(excluded PC)**



LFX Software platform

The LFX software is our user-friendly interface, developed with the physiologist in mind. The patient management interface provides all the tools necessary to perform every task done in the laboratory, while remaining easy to operate. Built on state-of-the-art Windows

tools like .net, C# and SQL database, the LFX software is the future of modern respiratory diagnostics. The LFX software has built-in quality control monitoring based on ATS/ERS guidelines, which are accessible during and after the measurements are performed.



Precision

Flow/Volume: Selection of best In/Ex curves from group of multiple trials

DLCO sample can be 0.05 l and still produce valid results

GLI, ECCS, NHANES, ATS and many more reference values available, display editable

Efficiency

Automatic offset correction

Online BTPS correction

No volume calibration

Graphical visualisation tools for evaluation

Maneuver animations for children

High quality

Clean and modern interface

Quality control via ATS/ERS criteria

Improved speed diagnosis

Customizable templates and reports

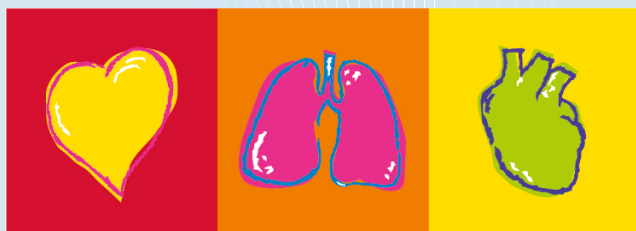
Comprehensive service and support

Intuitive workflow

Connect all GANSHORN devices to one software system

Large-format displays enable quick and correct evaluation of measurements and breathing maneuvers at first glance. The use of modern Windows tools such as .NET enables platform and language-independent communication. A modern database concept that uses both Microsoft SQL and MySQL offers the perfect approach – both for general practitioners and for large hospital networks.

- HIS integration
- DICOM
- GDT communication
- Full network compatibility
- SQL Database system
- Export of PDF and raw data files



SCHILLER

The Art of Diagnostics

About SCHILLER

SCHILLER A. G., a company based in Switzerland, was founded by Alfred Schiller in 1974. Over the last 50 years, it has evolved into a successful Global Group with 31 subsidiaries and dealers across 30 countries. Today, SCHILLER is a world-leading manufacturer and supplier of devices for cardiopulmonary diagnostics, defibrillation and patient monitoring as well as software solutions for the medical industry.

Schiller in India was founded as a joint venture in 1997, and since then has established itself as a leader in the medical technology sector. With 450+ employees, a state-of-the-art ISO 13485-certified production centre in Puducherry, multiple R&D centres, and 17 offices across India; Schiller makes advanced healthcare equipment accessible through a network of 100 sales and service dealers across more than 45 locations. Our product range includes Critical Care, Anaesthesia, Emergency Care, Cardiology, Respiratory Diagnostics, Radiology, and Robotics.



GANSHORN

SCHILLER GROUP

For 40 years GANSHORN has been manufacturing a complete state-of-the-art portfolio of pulmonary function testing systems for spirometry, bodyplethysmography, diffusion, bronchial provocation and cardiopulmonary stress testing. With its technological innovations, the company has been a leader in the diagnostics market since 1982. Many of these are now perceived as gold standards. In order to meet high quality standards, all key components are made in Germany. All devices are created in modern processes in Bavaria, from the initial idea to distribution.

Scan here
to know more:



All registered trademarks acknowledged.

Part no. B7100004 05/25 Ver. no. 1.1

SCHILLER
The Art of Diagnostics

Swiss H.Q.: SCHILLER AG, Altgasse 68, P. O. Box 1052, CH -6341 Baar, Switzerland
Indian H.O.: Schiller Healthcare India Pvt. Ltd., Advance House, Makwana Road, Andheri (East), Mumbai-59. Tel : + 91 - 22 - 61523333
Factory: No. 15/5 & 15/6, Vazhuthavur Road, Kurumbapet, Puducherry - 605 009, India

Regional Offices: Mumbai: 022-61523333 Email: sales.west@schillerindia.com Delhi: 011-41062067 / 09312432205 Email: sales.north@schillerindia.com Kolkata: 033-23593102 / 033-23593103 Email: sales.east@schillerindia.com Chennai: 044-28232648 / 044-28311021 Email: sales.south@schillerindia.com Ahmedabad: 079- 35337949 / 079- 35337950 Email: sales.west@schillerindia.com Puducherry: 0413- 220 2680 / 0413- 229 2940 Email: sales.south@schillerindia.com

CIN : U33110MH1997PTC111307

sales@schillerindia.com, help@schillerindia.com www.schillerindia.com 1800 209 8998

Follow us on : /SchillerHealthcareIndia /schiller_healthcare_india /schillerhealthcareindia /schiller_healthcare_india @schillerindia1074