

neumovent **SCHILLER**

EO-INF  
SV

05/05/18  
10:51

4.7

0.50

1.50

13.0

30

12

8.37

Pico  
13

ateau

ledia  
5.2

KEEP  
3.0

VT(ml)

VT(ml/min)

VT(ml)

VT(ml/min)

20

10

0.50

13.0

30

TI

TE

30

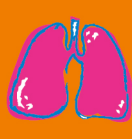
Manual Insp.

Insp/Exp Pause

Comprehensive monitoring  
High-flow oxygen therapy  
New ventilation modes

GraphNet neo

Mechanical ventilator that provides  
invasive and non-invasive ventilation,  
for neonatal & paediatric patients

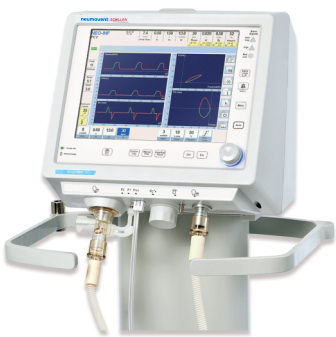


**SCHILLER**

The Art of Diagnostics

# GraphNet neo

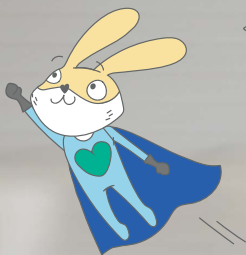
GraphNet neo is tailored for neonatal intensive care, offering both invasive and non-invasive support for infants, including premature babies, while closely monitoring key respiratory parameters.



## COMPREHENSIVE MONITORING

❖ The proximal flow sensor enhances flow and volume monitoring in the patient circuit, enabling accurate ventilation parameter measurements for informed decision-making, effective treatment, and ensured patient safety

Because they deserve  
the best care.

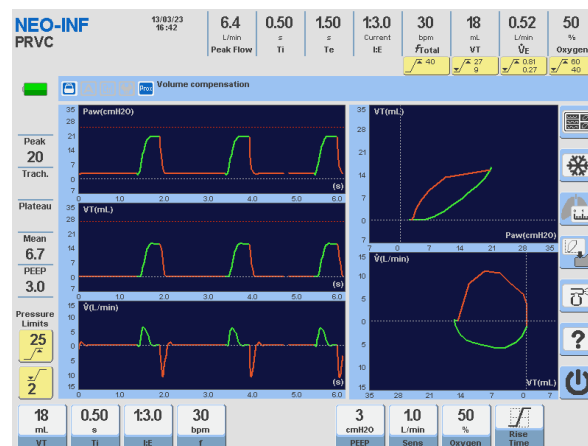




- ✦ Ventilation for neonatal patients
- ✦ Available for both invasive and non-invasive ventilation
- ✦ Continuous flow CPAP: non-invasive ventilation using nasal prongs with automatic leak compensation
- ✦ High-flow oxygen therapy
- ✦ Proximal flow sensor for enhanced monitoring
- ✦ Respiratory mechanics menu
- ✦ Suitable for intra-hospital transportation
- ✦ Accurate tidal volumes starting from 2mL
- ✦ 72 hours of trend storage
- ✦ Built-in battery with over 2.5 hours capacity
- ✦ Numerical display screen

## TARGETED VENTILATION MODE

- ✦ PRVC is an adaptive mode that automatically adjusts the pressure setpoint to ensure the user-configured volume, while accounting for potential changes in the patient's lung impedance.



## HIGH-FLOW OXYGEN THERAPY

- ✦ The addition of this method expands the use of the ventilator to the stages that are prior to and after the mechanical ventilation itself, by providing non-invasive assistance to oxygenation



## About SCHILLER

SCHILLER A. G., a company based in Switzerland, was founded by Alfred Schiller in 1974. Over the last 50 years, it has evolved into a successful Global Group with 31 subsidiaries and dealers across 30 countries. Today, SCHILLER is a world-leading manufacturer and supplier of devices for cardiopulmonary diagnostics, defibrillation and patient monitoring as well as software solutions for the medical industry.

Schiller in India was founded as a joint venture in 1997, and since then has established itself as a leader in the medical technology sector. With 450+ employees, a state-of-the-art ISO 13485-certified production centre in Puducherry, multiple R&D centres, and 17 offices across India; Schiller makes advanced healthcare equipment accessible through a network of 100 sales and service dealers across more than 45 locations. Our product range includes Critical Care, Anaesthesia, Emergency Care, Cardiology, Respiratory Diagnostics, Radiology, and Robotics.

Scan here  
to know more:



Part no.: B11.100015  12/24 Ver. no.: 1

Accessories shown are not part of standard configuration All registered trademarks acknowledged.

Technical data are subject to change without notice

**SCHILLER**  
The Art of Diagnostics



Swiss H.Q.: SCHILLER AG, Altgasse 68, P. O. Box 1052, CH -6341 Baar, Switzerland

Indian H.O.: Schiller Healthcare India Pvt. Ltd., Advance House, Makwana Road, Andheri (East), Mumbai-59. Tel : + 91 - 22 - 61523333

Factory: No. 15/5 & 15/6, Vazhuthavur Road, Kurumbapet, Puducherry - 605 009, India

Regional Offices: Mumbai: 022-61523333 Email: sales.west@schillerindia.com Delhi: 011-41062067 / 09312432205 Email: sales.north@schillerindia.com Kolkata: 033-23593102 / 033-23593103 Email: sales.east@schillerindia.com Chennai: 044-28232648 / 044-28311021 Email: sales.south@schillerindia.com Ahmedabad: 079- 35337949 / 079- 35337950 Email: sales.west@schillerindia.com Puducherry: 0413- 220 2680 / 0413- 229 2940 Email: sales.south@schillerindia.com

CIN : U33110MH1997PTC111307

 sales@schillerindia.com, help@schillerindia.com  www.schillerindia.com  1800 209 8998

Follow us on :  /SchillerHealthcareIndia  /schiller\_healthcare\_india  /schillerhealthcareindia  /schiller\_healthcare\_india  @schillerindia1074